

AVerMedia Gaming Utility (EDID configuration utility)

This tool is to used when you plan not to connect a monitor to the output (Pass-through) of your capture device. This utility will allow you to swap the EDID's that are not directly supported as defaults on our capture device while there is no passthrough connection.

What is EDID?

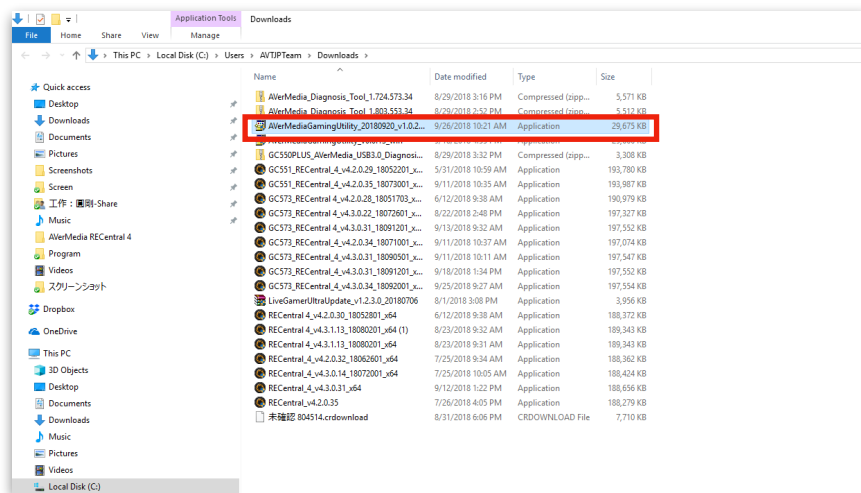
EDID stands for “Extended Display Identification Data” is it metadata format for display devices to describe supported resolutions and frame rates, among other data, to any connected video source.

Note:

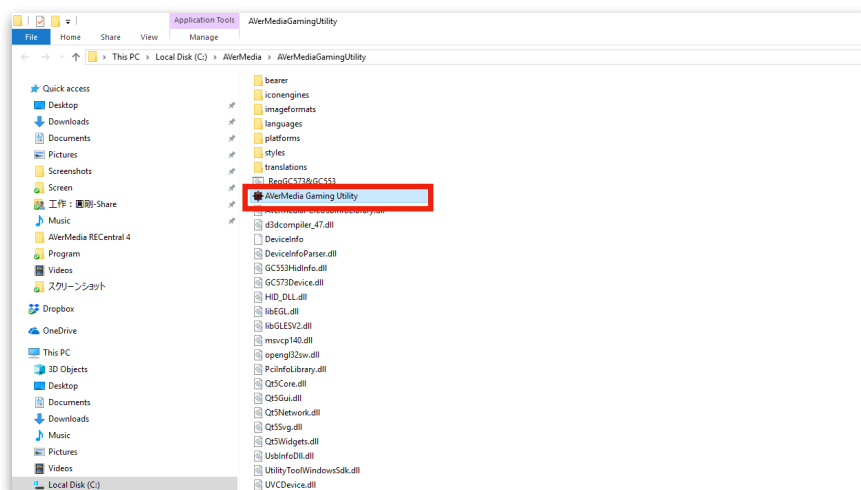
- Make the changes before opening and using RECentral.
- The following step are to be taken while no monitor is connected the HDMI OUT of your card.
- If you do connect a display/TV monitor that supports the resolution and frame rate you want, these steps wont be necessary, since the capture device will relay the EDID data provide by the display/TV monitor to the video source.

Follow this guide, the step are the same for both LG4K (GC573) and LGU (GC553):

-Download and run “AVerMedia Gaming Utility” zip file, it will automatically extract to “c:\AverMedia\AverMediaGamingUtilityTool”



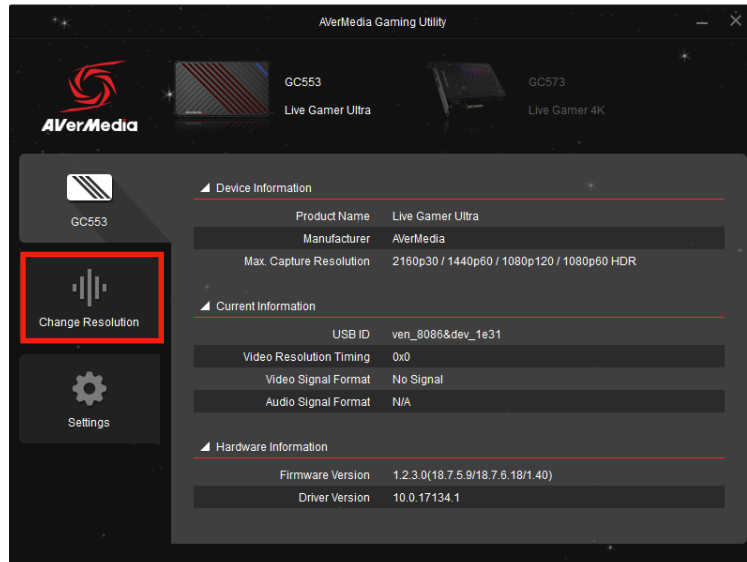
-Open “AVerMedia Gaming Utility”, there is no need for any installation.



Exchanging EDID (Resolutions and frame rate data)

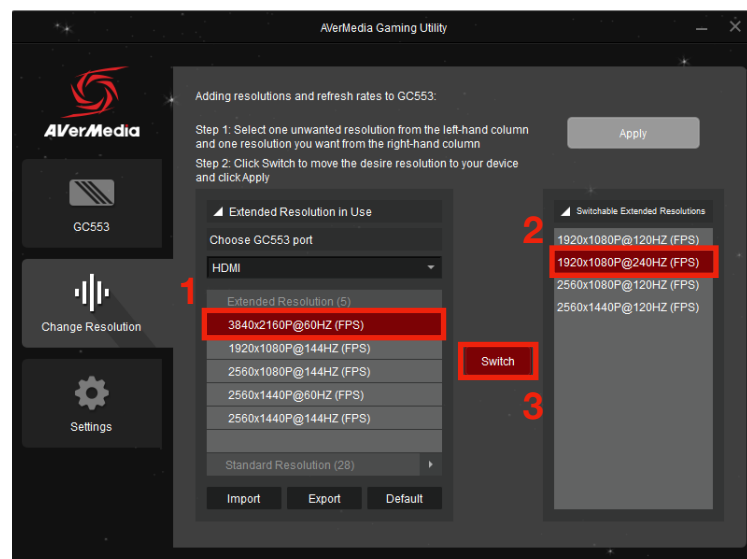
Step 1:

-Click on the “Change Resolution” tab.



Step 2:

To exchange the resolution, Select the resolution you want to exchange on the “Removable EDID” column on the left side (We suggest to choose one you know you wont be using that often). Now on the “All Removable EDIDs” list on the right column choose the one you want to add to the device. Then, click “Switch”.



Step3:

Now, click on “Apply”. And Done! You can now close the utility and start using RECentral ~

